

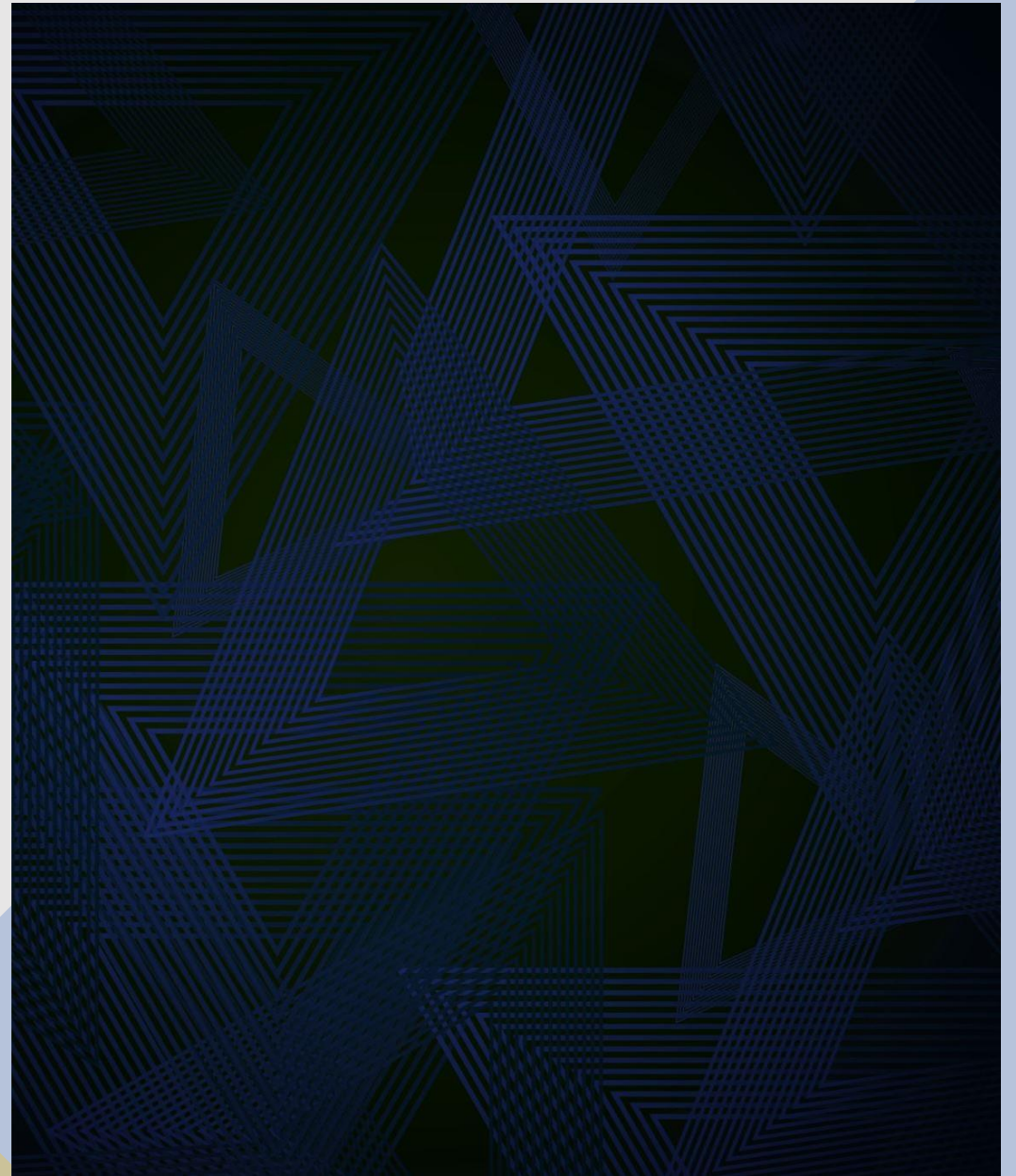
災害伝承を多様性の視点から考える

ゲルスタ・ユリア

東北大学 災害科学国際研究所

災害文化アーカイブ研究分野

准教授



自己紹介

- 2008年 ドイツ・ベルリン自由大学入学
日本学、文化人類学を専攻
- 2010～2011年 中央大学に留学
留学中に東日本大震災が起こった。
- 修士課程で研究を続け、2013年より半年間、上智大学の《東北からの声》プロジェクトに参加。ほぼ毎週末、被災者とのインタビューを実施。
- 2015年～ ベルリン自由大学博士課程
2017年、東北大学で研究活動
2019年4月 博士号取得
- 2019年1月～東北大学災害科学国際研究所研究員
- 2019年10月～東北大学災害科学国際研究所助教
- 2024年2月～東北大学災害科学国際研究所准教授



Disaster as a
social
phenomenon
災害は自然
なものでは
なくて社会
的なもので
ある

Disaster Risk = hazard ×
exposure × vulnerability

災害リスク = ハザード × エ
クスポージャー × 脆弱性

United Nations Office for
Disaster Risk Reduction
(UNDRR)

(例：火山噴火で人的な被害がなければ、一般的にそれは災害ではなく、自然現象と考えられている。)

減災（防災）の基本的な考え：

ハザードを完全に防ぐことは難しい/できないが、災害を防ぐことができる。

しかし、そのためにハードな防災（堤防等）が足りない。

→防災教育と災害伝承の重要性。



日本の災害伝承・ 文化的記憶

日本は他国と比べても、災害伝承・
災害文化的記憶（保存等）のトップ
ランナー

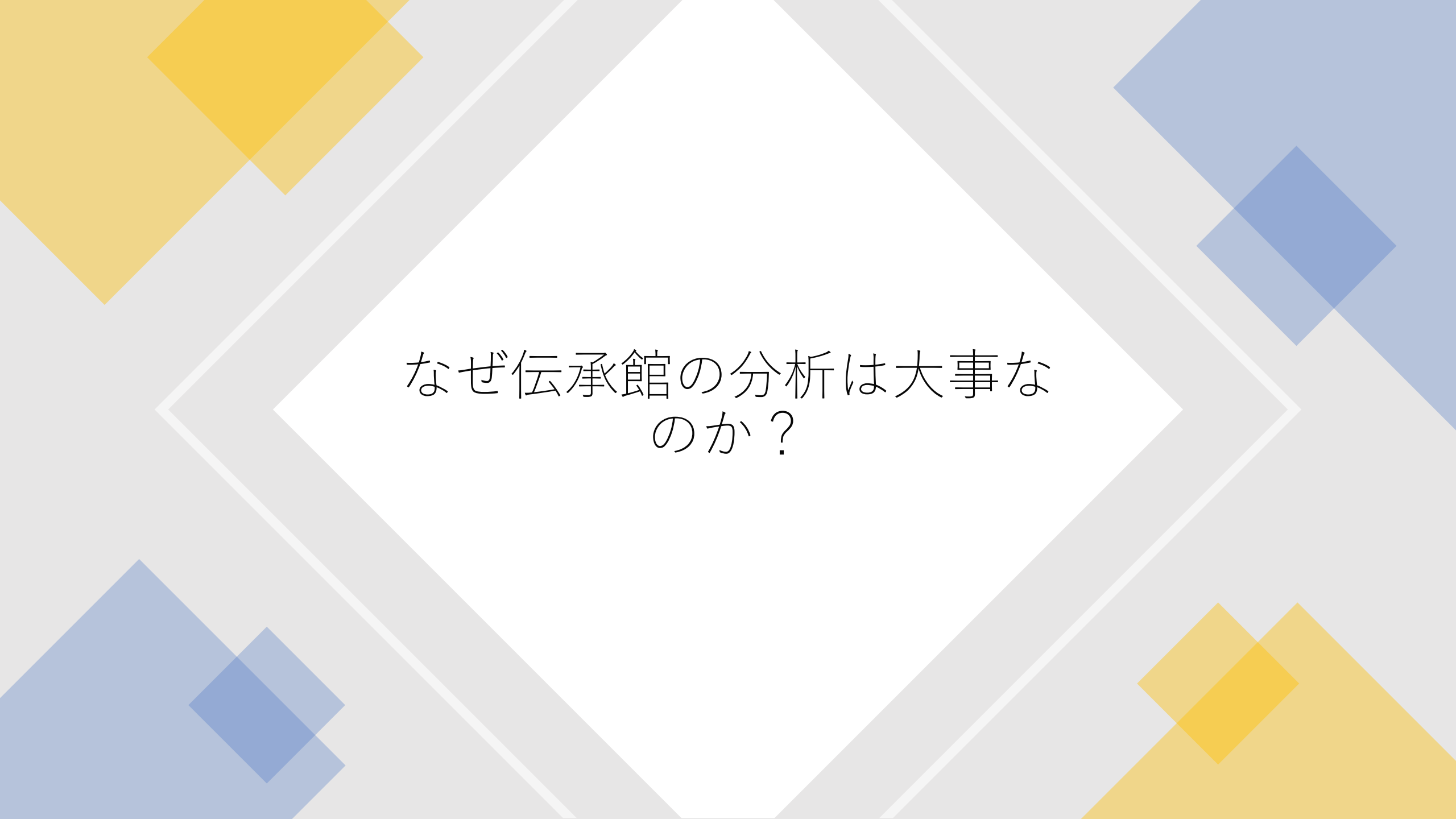
本研究の課題：

- 誰が、どのような教訓を、誰のために伝承するのか？
- （伝承館はどのようなナラティブを発信するのか）
- （県、市町村、民間の展示の違いと特徴を明らかにする）
- （日本の災害文化の特徴は。海外との違いと共通点は？）
- （防災教育という点での可能性）

Disaster Memorial Museums pre and post 3.11. 行政関係の伝承館/Disaster Memorial Museum

Figures made by Elizabeth Maly; Julia Gerster & Elizabeth Maly (2022) Japan's Disaster Memorial Museums and framing 3.11: Othering the Fukushima Daiichi nuclear disaster in cultural memory, Contemporary Japan, 34:2, 187-209, DOI: [10.1080/18692729.2022.2112479](https://doi.org/10.1080/18692729.2022.2112479)





なぜ伝承館の分析は大事な
のか？

- 客観的な知の位置づけ（というイメージがある）
- ミュジアムの展示は、政治的・文化的に特殊な環境に埋め込まれた交渉の産物である（Rigney 2016, 70）。
- 特定の出来事の記憶が、より広い（国の）ナラティブにどのように統合されるかを示すものである。
- “ミュージアムを支配することは、まさにコミュニティとその価値感と真実の表象を支配することを意味する” (Duncan 1995, 8)。
- 「社会が自らを (...) 公的に提示できる」場所でもある。ミュージアムは文化を強固にし、他のものにはほとんどない形で、文化に具体性を与えている」（Dubin 1999, 3）。
- ミュジアムは記憶の容器であり、社会のために記憶する（Abt 2011, 2011）。同時に、社会がある出来事をどのように記憶する、あるいは思い出すのかを形成するものである。

東日本大震災に関する 公的な災害伝承館の特徴

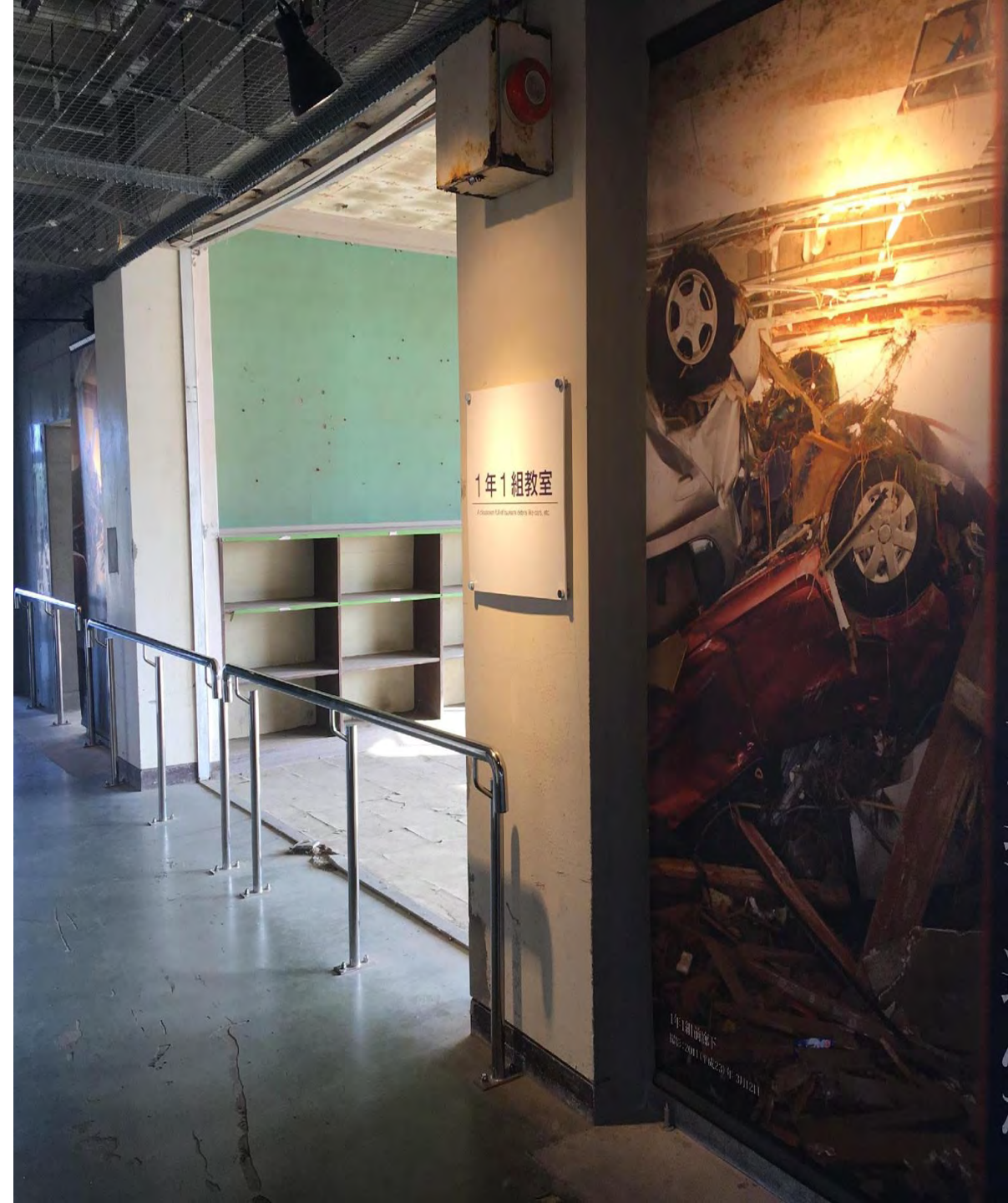
東日本大震災に関する 伝承館のカテゴリ

- 県立：県で受けた被害や復興の情報
- 市町村：市町村への影響
- 震災遺構：震災遺構で起こったレスキューまでの出来事

⇒**地域的な、部分的な物語**

⇒**東日本大震災、津波、原子力災害の「全体的な複合災害」を展示する伝承館がない**

⇒**原子力災害を語る伝承館が非常に少ない**



Julia Gerster & Elizabeth Maly
 (2022) Japan's Disaster
 Memorial Museums and
 framing 3.11: Othering the
 Fukushima Daiichi nuclear
 disaster in cultural memory,
 Contemporary Japan, 34:2,
 187-209, DOI:
[10.1080/18692729.2022.2112
 479](https://doi.org/10.1080/18692729.2022.2112479)

Name	Operator and location	Focus of the exhibition	Mission Statement/ Description as stated by the facility. *translated from Japanese by the authors
Iwate Prefecture			
1. Iwate Tsunami Memorial Museum	Iwate Prefecture (Location: Rikuzentakata City)	Overview on impact of tsunami and earthquake on Iwate Prefecture, public response and scientific background of earthquakes and tsunamis.	Protecting lives, and living together with the ocean and earth. To never again experience the sadness of the Great East Japan Earthquake and Tsunami. (...)The Iwate Tsunami Memorial will share the wisdom of our predecessors, the reality of the Great East Japan Earthquake and Tsunami and the lessons we've learned with the world to become a society strong against natural disaster.
2 Unosumai Tsunami Memorial Hall	Kamaishi City	Impact of the tsunami on the Unosumai district, evacuation procedures and recovery. Meeting space for residents.	A facility that conveys the events and lessons learned from the earthquake and promotes disaster prevention.
3.3.11 Great East Japan Earthquake Tono City Logistics Support Museum	Tono City	Focus on disaster support	(...) *This museum was built to publish valuable materials related to logistical support activities, such as handwritten documents and photographs kept by the city, and to widely disseminate the lessons learned from these activities.
4.Ofunato Tsunami Museum	Ofunato City	Focus on the impact of the tsunami on Ofunato City and DRR	Many of the victims of the Great East Japan Earthquake did not escape, were on the way, or returned to their homes. If they had evacuated earlier, more people would have survived. Ofunato Tsunami Museum is the place to convey the threat and experience of the tsunami to posterity through images and storytellers.
Miyagi Prefecture			
5.Miyagi 3.11 Disaster Memorial Museum	Miyagi Prefecture (Location: Ishinomaki City)	Overview of the impact of the tsunami on Miyagi Prefecture and DRR.	*(...)In order not to repeat the same sadness and chaos, it is our duty to pass the memory of the Great East Japan Earthquake and the lessons to future generations. We have to move towards the revitalization and reconstruction of the disaster area, and keep on heading forwards and working together with the people and the community. The Miyagi 3.11 Disaster Memorial Museum was built to meet these responsibilities and to renew this vow to the future. To prepare for the coming disasters, we have to share these lessons and strengthen the interaction with people from across the country and worldwide.
6.Ruins ofKoyo High School Kesenuma City Memorial Museum	Kesenuma City	Impact of the tsunami on the school building and evacuation efforts of children and school staff.	The goal of the Ruins of the Great East Japan Earthquake Kesenuma City Memorial Museum is to preserve the memories and lessons of the disaster for the future and serve as "visible evidence" that continues ringing alarm bells, contributing to Kesenuma City's initiative to achieve the target of zero tsunami deaths.
7.3.11 Disaster Recovery Memorial Museum	Higashi Matsushima City	Impact of the tsunami on Higashimatsushima City and recovery efforts.	*The "Higashi Matsushima 3.11 Disaster Recovery Memorial Museum" will continue to display and introduce records of the Great East Japan Earthquake, and the reconstruction status, etc., and pass them on to future generations to prevent weathering of the earthquake and foster disaster prevention awareness.
8.Sendai 3.11 Memorial Community Center	Sendai City	Permanent exhibition about the local impact of the tsunami and the recovery process. Temporary exhibitions highlight different aspects of disasters.	*The Sendai 3.11 Memorial Community Center aims to be a base for connecting to the future and the world by preserving wisdom and lessons from our memory and experience through communication.
9.The Ruins of Arahama Elementary School	Sendai City	Impact of the tsunami on Arahama Elementary school, rescue of the children and staff, and recovery efforts of Sendai City. Strong DRR approach.	It is our city's goal to never again fall victim to a tsunami, to pass on the lessons we learned also and to show the real threat of tsunami to future generations. For these reasons, the ruins of the Arahama Elementary School building will be preserved, along with other records, and opened to the public.

Julia Gerster & Elizabeth Maly
 (2022) Japan's Disaster
 Memorial Museums and
 framing 3.11: Othering the
 Fukushima Daiichi nuclear
 disaster in cultural memory,
 Contemporary Japan, 34:2,
 187-209, DOI:

[10.1080/18692729.2022.2112479](https://doi.org/10.1080/18692729.2022.2112479)

10. Millenium Hope Hill Aino Kama Park	Iwanuma City	Small museum that focuses on the tsunami inside a memorial park.	The debris from the tsunami is evidence of the many lives spent in this place. It was used as the foundation of the hills to memorialize the tsunami and reflect the emotions of those affected by it. The result is a memorial park that preserves the remains of the communities as a way to disseminate the memories of the disaster and the lessons learned from it, both domestically and internationally. It also serves as a place for disaster-mitigation education.
11. The Ruins of Nakahama Elementary School	Yamamoto Town	Impact of the tsunami on Nakahama Elementary school, rescue of the children and staff, DRR and recovery efforts of Yamamoto Town.	*Nakahama Elementary, which has saved the lives of 90 children and local residents, was opened to the public as a place for disaster education and with the aim of passing on the memories on the enormous damage caused by the Great East Japan Earthquake to posterity, preventing weathering of the earthquake and raising awareness of disaster prevention.
Fukushima Prefecture			
12. Great East Japan Earthquake and Nuclear Disaster Memorial Museum	Fukushima Prefecture (Location: Futaba Town)	Focus on nuclear disaster. Overview on nuclear accident and its impact on Fukushima Prefecture. Focus on evacuation and recovery procedures. Temporary exhibitions introduce community responses.	It is the common desire of the people who experienced it themselves that the lessons and records from this massive and compound disaster never faced by the world before, and the history of the steady recovery process that followed, are gathered, preserved and investigated, so that they can be passed on to following generations and shared with the world without fading away.
13. Commutan Fukushima	Fukushima Prefecture (Location: Miharu Town)	Focus on energy issues. Exhibition on nuclear energy, renewable energy, and overview on the nuclear disaster. (Not a disaster museum but included for different reasons explained below)	Commutan Fukushima (Communication Building of the Centre for Environmental Creation, Fukushima prefecture) was established as a facility with the aim to respond to anxiety and questions from the residents of Fukushima prefecture, to help their understanding of radiation and environmental issues from a familiar perspective, and to deepen their awareness of environmental recovery and creation. (...) We are aiming for the opportunity for children and various organizations to share the knowledge and deepen consciousness by learning and experiencing in Commutan Fukushima and to consider, create and send information of Fukushima's future from their respective standpoints.
14. Traditional Requiem Memorial Hall	Soma City	Focus on tsunami in tsunami inundated area.	*This facility was built as a place for the bereaved families left behind and in memory of the victims of the earthquake and uses photographs of the scenery of the Ohama / Haragama area and the Isobe area, which were damaged by the tsunami of the Great East Japan Earthquake, to show to the coming generations. It was built for the purpose of making it a place for exchange, and exhibits photographs of the scenery before the earthquake and local events, as well as video records of the day of the earthquake.
15. Earthquake remains Ukedo Elementary School	Namie Town	Focus on the impact of the tsunami on the school building and evacuation procedure of the children and staff. Mentioning of the nuclear disaster in videos.	*In order to pass on to future generations the memories and records of the region as well as the threats and lessons learned from the Great East Japan Earthquake, and to help raise awareness of disaster risk reduction, the town's damaged elementary school is opened to the public as disaster heritage (<i>shinsai ikō</i>).
16. Tomioka Archive Museum	Tomioka Town	Tomioka Town's history and heritage. The tsunami and nuclear disaster are presented as part of the town's history.	The museum showcases various features of Tomioka Town, as well as the natural and nuclear disasters that occurred in this area. (...) Imagine what would happen if a complex disaster like the one in Tomioka occurred in your area. It just might change the way you look at the future.
17. Iwaki 3.11 Memorial and Revitalization Museum	Iwaki City	Focus on tsunami and DRR	The Usuiso district of Iwaki, which was devastated by the tsunami that struck the city on 11 March 2011, is now home to a new facility that aims to preserve the memories and lessons learnt from the Great East Japan Earthquake so that they can be passed down to future generations.

Museum	Operator (location)	Main Focus	Mission Statement
1. 東日本大震災津波伝承館 いわてTSUNAMIメモリアル	岩手県(陸前高田市)	Overview on impact of tsunami and earthquake on Iwate Prefecture, public response and scientific background of earthquakes and tsunamis.	<p>(...)この悲しみを繰り返さないためには、知恵と技術で備え、自ら行動することにより、様々な自然災害から命を守り、そして、自然災害を乗り越えていくことが重要です。</p> <p>東日本大震災津波伝承館は、先人の英知に学び、東日本大震災津波の事実と教訓を世界中の人々と共有し、自然災害に強い社会を一緒に実現することを目指します。</p> <p>そして、東日本大震災津波を乗り越えて進む姿を、支援への感謝とともに発信していきます。</p>
5. みやぎ東日本大震災津波伝承館	宮城県(石巻市)	Overview of the impact of the tsunami on Miyagi Prefecture and DRR.	<p>(...)同じ悲しみと混乱を繰り返さないために、東日本大震災の記憶と教訓を永く後世に伝え継ぐこと。被災地の再生と復興に向けて、人々と地域が力を合わせて歩み続けること。それが、私たちの責務です。</p> <p>みやぎ東日本大震災津波伝承館は、その責務を確かめ合い、未来への誓いを新たにするための場として整備されました。</p> <p>次なる災害への備えを確かなものにできるよう、全国、世界、そして次世代の人々とながら、発信と交流に努めてまいります。</p>

Museum	Operator (location)	Main Focus	Mission Statement
12. 東日本大震災原子力災害伝承館	福島県 (双葉町)	<p>Focus on the nuclear disaster.</p> <p>Overview on the nuclear accident and its impact on Fukushima Prefecture.</p> <p>Focus on evacuation and recovery procedures.</p> <p>Temporary exhibitions introduce community responses.</p>	<p>(...) 私たちが経験した複合災害がいかに過酷であり、そして今もその影響が続いていることを物語っています。東日本大震災・原子力災害伝承館は展示や語り部、研修、調査・研究を通じて、未曾有の複合災害について福島で何が起き、どう向き合ってきたかを伝え、防災・減災に向けた教訓を国内外や未来へつないでまいります。</p>



目的：防災、命を守る



ジェンダ・多様性の視点から
見た災害伝承
Diversity and Disaster Memory

Sunhee Lee; Julia Gerster, Nao Sakaguchi, Mariko Ogawa and
Alyne Delaney

分析した3.11の災害伝承館

Name	Prefecture	Year of opening	Year of analyzed exhibition data
Prefectural museums			
Iwate TSUNAMI Memorial Museum	Iwate	2019	2023
Miyagi 3.11 Disaster Memorial Museum	Miyagi	2021	2023
Great East Japan Earthquake and Nuclear Disaster Memorial Museum	Fukushima	2020	2022
Municipal Museums			
Ofunato Tsunami Museum	Iwate	2013	2023
Bosai Gakushu Center	Iwate	2023	2023
Kesen Junior High School	Iwate	2021	2023
Kadonowaki Elementary School	Miyagi	2022	2023
Okawa Elementary School	Miyagi	2021	2023
3.11 Disaster Recovery Memorial Museum Nobiru	Miyagi	2017	2022
Sendai 3.11 Memorial Community Center	Miyagi	2016	2024
The Ruins of Arahama Elementary School	Miyagi	2017	2024
Natori Memorial Museum	Miyagi	2020	2023
Earthquake Remains Ukedo Elementary School	Fukushima	2021	2024
Tomioka Archive Museum	Fukushima	2021	2023
Iwaki 3.11 Memorial and Revitalization Museum	Fukushima	2020	2023

公的伝承館の展示に行うジェンダーと多 様性

- 人間が移っている展示物のほとんどは日本人男性を表す（写真、ビデオの記録など）
- 証言者の男性がさらに多い

Understanding how gender relations shape women's and men's lives is critical to disaster risk reduction (DRR). This is because women's and men's different roles, responsibilities, and access to resources influence how each will be affected by different hazards, and how they will cope with and recover from disaster. Unequal power relations between women and men mean that, despite the incredible resilience and capacity for survival that women often exhibit in the face of disaster, they also experience a range of gender-specific vulnerabilities. (Oxfam 2022)

ジェンダー関係が女性と男性の生活をどのよう形成しているかを理解することは、防災にとっても重要なことです。なぜなら、女性と男性の異なる役割、責任、資源へのアクセスは、それぞれが異なるハザードの影響を受け、災害にどのように対処し回復するかに影響するからです。女性と男性の間で不平等な力関係は、女性が災害に直面したときにしばしば見せる驚異的な回復力と生存能力にもかかわらず、ジェンダー特有の様々な脆弱性をも経験することを意味します。(オックスファム2022)

ジェンダー的、性別的に異なった災害の影響 東日本大震災の事例

災害時：

- 家の片づけ
- 家族やペットを探しに家に帰った
- 介護；避難したくなかった高齢者の世話

災害直後：

- 避難所で必要なものが違う（生理用品、下着等）
- プライバシー（着替え、赤ちゃんの世話等）
- トイレ（セキュリティ関係）...

復興段階：

Representation（復興政策；自治会長や町内会長のほとんどが男性）

伝承：代表者のほとんどが男性

男性：

災害後；自殺率が比較的多い、仕事関係で犠牲になった男性が多い

伝承館で女性の声が少ない理由

- わざと女性の声を反映しない伝承館はないが、偏りがあることに対して意識がないところが多い（つまり：いつも通りに行動すると選ばれた代表者の中、男性が多くなる）
- 「代表者」が立場として選ばれた
- 「防災」に関する専門家と職業に関する人の中に男性が多い
- 「ジェンダー」は課題として取り上げていなかった（気付かなかった）
- 検討会議員の女性が少ない
- キュレーターのネットワークに男性が多い
- 証言など集めたが非公開を望んだ女性が多かった
- ...等

より多様な災害伝承・防災の重要性

多様なニーズ

- 障害者：逃げる方法、避難所で必要なもの等
- 外国人：言葉の壁、災害意識の差、経験の差
- 宗教のマイノリティ：食事制限
- セクシュアル・マイノリティ
- アレルギー
- ペット...

改善に向けて

- 検討委員会、伝承館の学芸員、キュレーターや職員の女性割合・多様な関係者を増やす
- 証言者の中で女性を増やす
- ジェンダー多様性に関して意識させる
- 多様な方の証言等を記録し、条件付き公開
- 「いない理由」を可視化する...等



大学で伝承について
学ぶ

授業で伝承について学ぶ

授業：

- 福島復興と再生
- デジタルアーカイブと東日本大震災

海外向け：東日本大震災とメモリ学

ワークショップやサマースクール：

- 災害とナラティブ
- デジタルアーカイブのワークショップ
- スタディツアー等

ハーバード大学のJDAについて

- 2011年東日本大震災を契機に、ハーバード大学エドウィン・O・ライシャワー日本研究所では、日本災害デジタルアーカイブ、Japan Disasters Digital Archive、（以下JDA）の開発した。
- JDAには、デジタルアーカイブのシステム内で登録されているコンテンツを利用者が独自の観点で、再収集や編集、共有できる機能などを有している。
- さらに、利用者に対して、新たなコンテンツの投稿や既存コンテンツのメタデータ編集などを行うことを推奨しており、震災デジタルアーカイブに寄与を促している。

- JDAの主な機能は、**マイ・コレクション**、**ノート**、**ジオロケーション**機能などがある。マイ・コレクション機能は、テーマ、場所などの利用者独自の基準でアーカイブ内にあるコンテンツを整理することが可能である。また、ノート機能を使って、コンテンツにメモや独自解釈を付け加えることもできる。
- さらに、マイ・コレクションは、他者も閲覧できるように公開することが可能である。公開機能により、他者が災害の新たな側面を知り、様々な観点で関わることができる。
- ジオロケーション機能は、地図上でコンテンツを閲覧や検索することができる機能である。さらに、コンテンツの空間的密度をヒートマップで表現し、範囲を限定することで、コンテンツが地図上に点として表示される。

English

Japanese



Ecosystems and Animals Post-3.11

Created 10/18/21 by KM

This Collection explores various ways animal life and ecosystems were ...

Fukushima and Ocean Radioactivity by Ken Buesseler

Published 03/01/2014 | ryo | Website |

<https://www.jstor.org/stable>

[/24862124?casa_token=SqdiZXX16jYAAAAA%3A9G9nsDZBYi0k3UEHYNwliKrGWizHIQc6VP_GDfJq1zhWWU5AzfQatf0MNk3BOog6PcM-AVAFrzOy_PiQLmfX1FI2sFGekvZq2-ECw3s44KAp_EqRw&seq=1](https://www.jstor.org/stable/24862124?casa_token=SqdiZXX16jYAAAAA%3A9G9nsDZBYi0k3UEHYNwliKrGWizHIQc6VP_GDfJq1zhWWU5AzfQatf0MNk3BOog6PcM-AVAFrzOy_PiQLmfX1FI2sFGekvZq2-ECw3s44KAp_EqRw&seq=1)

ABSTRACT: The triple disaster of the March 11, 2011, earthquake, tsuna...

Baby turtles return to sea on beach hit by 2011 tsunami

Published 10/21/2012 | Asahi Shimbun | Article |

VIEW FULL COLLECTION

About

ENGLISH

日本語

Contribute

Resources



JDATEHOKEU2021

Please feel free to explore. To reset your password, please click the "sign In" icon and follow the directions.

English

Japanese

Search

648 Collections

My Collections



osystems and Animals Post-3.11

10/18/2021 by KM | 19 Items

JDAR-0065

10 Items | Private

JDAD-0068

5 Items | Private

ID00

1 Items | Private

堤防が築かれる

0 Items | Private

JDAR-0076

5 Items | Private

JDAR-0076



ems



The Bayanihan Kesenuma Filipino Community

08/26/15 by KH | 7 Items



週刊 동네 (トンネ)

08/03/15 by AW | 39 Items



同胞生活情報誌 하나 (ハナ)

08/02/15 by AW | 12 Items



ズアイ)

ems



いわき市の酒井歯科医院

08/02/15 by AW | 33 Items



全国私立保育園連盟

08/02/15 by AW | 26 Items



しんぐるまざあず・ふぉーらむ

07/09/15 by ShowaBoston Interns | 16 Items



ems



地球の最先から

07/01/15 by AW | 31 Items



全国コミュニティライフサポートセンター

06/30/15 by AW | 31 Items

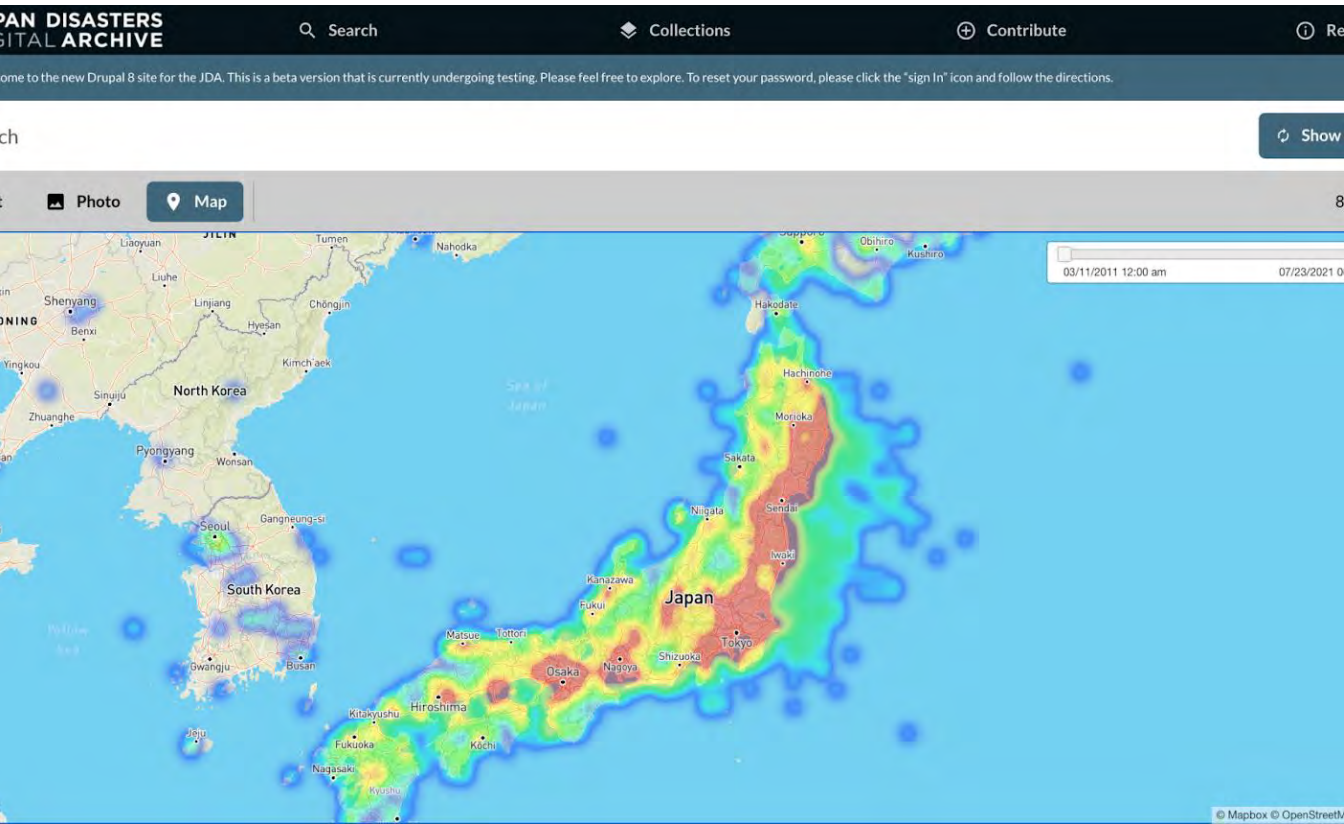


基礎ゼミマイ・コレクション

06/30/15 by 基礎ゼミ | 64 Items

ジオロケーション 機能

Roughly half
of the items in
the archive
(about 840,000
out of 1.7
million) conta
in geo-location
in the
metadata.



メタデータ

- タグ
- ロケーション (場所)
- 翻訳
- 等...

English Japanese

Pet cats purr again upon return after long post-3/11 separation with family

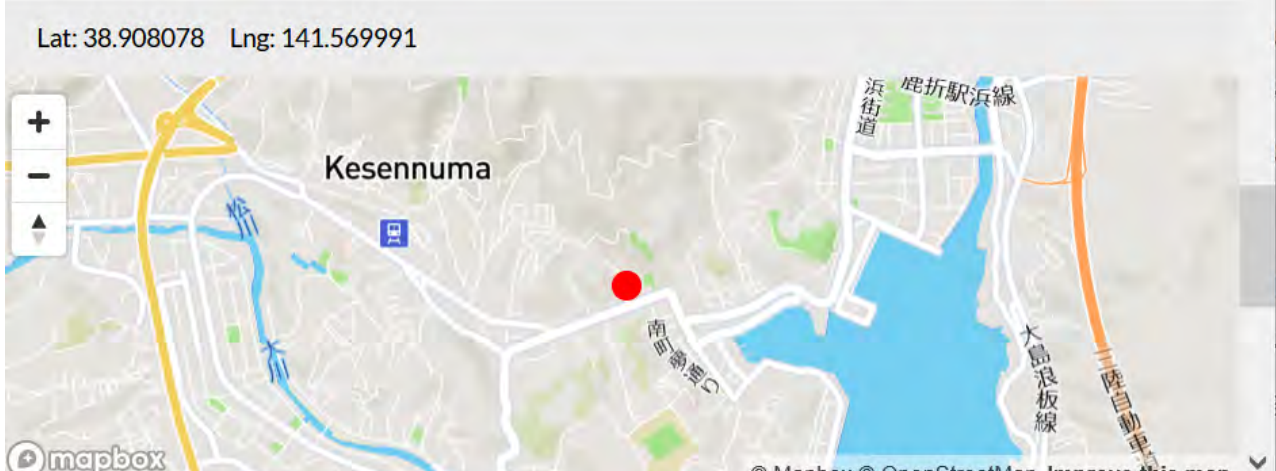
Published 11/24/2015 | via [Asahi Shimbun](#) | By MAMIE KAWAI/Staff Writer | Article | [Citation URL](#)

TAGS

CAT KESENUMA MIYAGI PREFECTURE PETS ANIMAL
GREAT EAST JAPAN EARTHQUAKE TSUNAMI + ADD

LOCATION

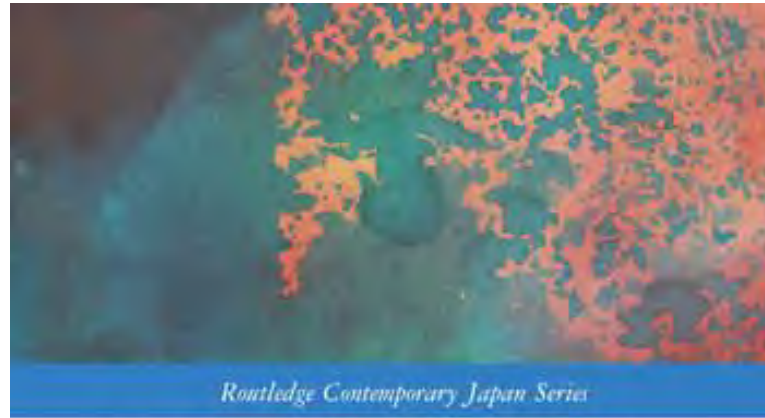
Lat: 38.908078 Lng: 141.569991



mapbox

The JDA Workshop





Routledge Contemporary Japan Series

JAPAN'S TRIPLE DISASTER

**PURSUING JUSTICE AFTER THE GREAT EAST JAPAN
EARTHQUAKE, TSUNAMI, AND FUKUSHIMA
NUCLEAR ACCIDENT**

Edited by
Natalia Novikova, Julia Gerster
and Manuela Hartwig



Today's talk (Open Access)

Julia Gerster & Elizabeth Maly (2022) Japan's Disaster Memorial Museums and framing 3.11: Othering the Fukushima Daiichi nuclear disaster in cultural memory, *Contemporary Japan*, 34:2, 187-209, DOI: [10.1080/18692729.2022.2112479](https://doi.org/10.1080/18692729.2022.2112479)



ご清聴ありがとうございました

参考文献

- Aikawa, Y. (2006). Saigai to sono fukko ni okeru josei mondai no kozo: Hanshin-Awaji Daishinsai no jireikara [Analysis of the gendered structure of disaster and post-disaster revival: in the case of the Great Hanshin-Awaji Earthquake]. *NWEC Kenkyu Journal (Journal of the National Women's Education Center of Japan)*, 10, 5–14.
- Arnold-de Simine, Silke. 2013. *Mediating Memory in the Museum: Trauma, Empathy, Nostalgia*. Basingstoke: Palgrave Macmillan.
- Asano Fumie and Tendo Mutsuko (2021) Saigaijoseigaku wo tsukuru. [Creating women disaster studies]. Tokyo: Seikatsu shisou sha.
- Assmann, Jan, and John Czaplicka. 1995. "Collective Memory and Cultural Identity." *New German Critique* 65 (65): 125–133. doi:10.2307/488538.
- Benavides, Hugo O. 2009. "Narratives of Power, the Power of Narratives. The Failing Foundational Narrative of the Ecuadorian Nation". In *Contested Histories in Public Space: Memory, Race, and Nation*, edited by Daniel Walkowitz and Lisa Maya Knauer, 178–196. Durham & London: Duke University Press.
- DeTogni, Giulia (2022) *Fall-out from Fukushima Nuclear Evacuees Seeking Compensation and Legal Protection After the Triple Meltdown*, Routledge.
- Densho Road Promotion Organization. 1 April 2023. "Densho Road." <https://www.311densho.or.jp/denshoroad/index.html?no=2>
- Dubin, Steven C. 1999. *Displays of Power. Controversy in the American Museum from the Enola Gay to Sensation*. New York: New York University Press.
- Duncan, Carol. 1995. *Civilizing Rituals: Inside Public Art Museums*. London: Routledge.

- Enarson, E. (1999). Violence against women in disasters: a study of domestic violence programs in the US and Canada. *Violence Against Women*, 5(7), 742–768.
- Enarson, E. (2006). Violence against women in disasters: a factsheet. GDN website.
- Enarson, Elaine, Fothergill Alice, and Peek Lori (2018) *Gender and Disaster: Foundations and Directions for Research and Practice*. Rodriguez Havidan; Donner William; Trainor D. Joseph. *Handbook of Disaster research*. Second Edition. Cham: Springer, 205-223.
- FIPO, The Great East Japan Earthquake and Nuclear Disaster Memorial Museum. 2021. “Genshiryoku Kōhō No Hyōgo Moji Paneru No Tenji Ni Tsuite.” [About the exhibition of the slogan panel of nuclear power public relations] <https://www.fipo.or.jp/lore/archives/2430.22.10.201>
- Gender Equality Bureau Cabinet Office (2012) Heisei 24 nenban danjo kyoudou sankakuhakusho [2012 white paper on gender equality] https://www.gender.go.jp/about_danjo/whitepaper/h24/zentai/html/honpen/b1_s00_01.html
- Gerster, Julia (2019): Hierarchies of affectedness: Kizuna, perceptions of loss, and social dynamics in post-3.11 Japan. *International Journal of Disaster Risk Reduction*. Volume 41. <https://doi.org/10.1016/j.ijdr.2019.101304>
- Gerster, Julia (2022) Soushitsu no hieraruki to engeki nochikara. *Fukushimakenritsu Souma koukou housoukyoku no [ima tsutaetai koto (kari)] no jirei ni sokushite*, [Hierarchies of affectedness and the Power of Theater. The Case of the Soma Chronicles’ “What I Want to Tell You Now (Tentative)”.] *Journal of Earth Systems and Ethics*.
- Gerster, Julia (2023) 「復興中の居場所とジェンダーの役割：3. 1 1 は「機会の窓」になったのか？」、李善姫・高倉浩樹編 『災害後を生きる——慰霊と回復の災害人文学』 189-207. 「Gerster, Julia (2023) “Place in Reconstruction and the Role of Gender: Was 3.11 a ‘Window of Opportunity’?” In: Lee, Sunhee and Hiroki Takakura (eds.), *Living After Disaster: Disaster Anthropology of Consolation and Recovery*, 189-207.]
- Gerster, Julia (forthcoming) More than mushrooms: Local food culture and place-making after “Fukushima”. In: Huang, Shumei and Maly, Elizabeth (accepted edited volume): *Place-making in Displacement: Community’s responses to disasters from the Pacific Rim*. Routledge Pacific Rim Geographies series.

- Julia Gerster & Elizabeth Maly (2022) Japan's Disaster Memorial Museums and framing 3.11: Othering the Fukushima Daiichi nuclear disaster in cultural memory, *Contemporary Japan*, 34:2, 187-209, DOI: 10.1080/18692729.2022.2112479
- Howe, Nicole 2019: More women die in natural disasters – Why? And what can be done? <https://www.brinknews.com/gender-and-disasters/>
- Hyndman J (2008). Feminism, conflict and disasters in post-tsunami Sri Lanka. *Gender, Technology and Development*, 12(1), 101-121.
- Ikeda, K. (2010). Gender no shiten wo torikonda saigai jeizakusei no bunseki—Banguradishu no jirei kara [An analysis of disaster vulnerability from a gender perspective: the case of Bangladesh]. *Shizuoka daigaku kyōikugakubu kenkyu hōkoku jinbun shakai shizenkagaku hen*, 60, 1–16.
- Kitamura, Miwako (2022) 東日本大震災の被災地がジェンダーの不平等によって受けた長期的な影響についての研究 [A Study of the Impact of Gender Inequality on the Long-Term Damage Caused by the Great East Japan Earthquake in 2011] Chiiki anzen gakkai shi.
- Kimura, Aya (2016) *Radiation Brain Moms and Citizen Scientists: The Gender Politics of Food Contamination after Fukushima*, Duke University Press.
- Lah, Kyunh (2011) CNN <https://www.ncbi.nlm.nih.gov/pmc/articles/PMC8208296/>
- Lee, Sunhee (2023) Citizenship and Disaster: Experiences of Foreign Women after 3.11. In Natalia Novikova, Julia Gerster & Manuela Hartwig (eds) *Japan's Triple Disaster. Pursuing Justice after the Great East Japan Earthquake, Tsunami, and Fukushima Nuclear Accident*. Routledge (in print; June 23, 2023).
- Mirai Support. 2020. *The 2019 Report on Disaster Memorial Activities*. 3.11 Mirai Support. 3.11 Future Support Association.
- Morioka Rika. Gender difference in the health risk perception of radiation from Fukushima in Japan: the role of hegemonic masculinity. *Soc Sci Med*. 2014 Apr;107:105-12. doi: 10.1016/j.socscimed.2014.02.014. Epub 2014 Feb 14. PMID: 24607672.
- National Police Agency 2023 *Dead and Missing of the Great East Japan Earthquake*

NHK 2020 災害時の性被害 東日本大震災で見えてきた被災地の声 【vol.58】

<https://www.nhk.or.jp/minplus/0011/topic027.html>

Neumayer and Plümper (2007) The Gendered Nature of Natural Disasters: The Impact of Catastrophic Events on the Gender Gap in Life Expectancy, 1981-2022 *Annals of the Association of American Geographers*, 97 (3). pp. 551-566. DOI: 10.1111/j.1467-8306.2007.00563.x

Nishio A, Akazawa K, Shibuya F, Abe R, Nushida H, Ueno Y et al (2009) Influence on the suicide rate two years after a devastating disaster: A report from the 1995 Great Hanshin-Awaji earthquake. *Psychiatry and Clinical Neurosciences*, 63(2), 247-250.

Ogawa, Mariko (2023) Disasters and Domestic Violence. Making Structural Injustices toward Women after the Great East Japan Earthquake Visible. In Natalia Novikova, Julia Gerster & Manuela Hartwig (eds) *Japan's Triple Disaster. Pursuing Justice after the Great East Japan Earthquake, Tsunami, and Fukushima Nuclear Accident*. Routledge (in print; June 23, 2023).

Ono, Yuichi, Marlene Murray, Makoto Sakamoto, Hiroshi Sato, Pornthum Thumwimol, Vipakorn Thumwimol, and Ratchaneekorn Thongthip. 2021. "The Role of Museums in Telling Live Lessons." *Journal of Disaster Research* 16 (2): 135–140. doi:10.20965/jdr.2021.p0135.

Reconstruction Design Council. 2011. "The Seven Principles for the Reconstruction Framework."

<https://www.cas.go.jp/jp/fukkou/#08>

Sadaike, Yuki (2023) The Recognition of "Death by Disaster In: Natalia Novikova, Julia Gerster & Manuela Hartwig (eds) *Japan's Triple Disaster. Pursuing Justice after the Great East Japan Earthquake, Tsunami, and Fukushima Nuclear Accident*. Routledge (in print; June 23, 2023).

Takebayashi Y, Hoshino H, Kunii Y, Niwa SI, Maeda M. Characteristics of Disaster-Related Suicide in Fukushima Prefecture After the Nuclear Accident. *Crisis*. 2020 Nov;41(6):475-482. doi: 10.1027/0227-5910/a000679. Epub 2020 Mar 6. PMID: 32141328; PMCID: PMC8208296.

<https://www.ncbi.nlm.nih.gov/pmc/articles/PMC8208296/>

Takenobu Mieko and Akaishi Chieko (2012): *Saigai shien ni josei no shiten wo! Dare mo kibou no moteru tayouna shien no katachi to ha. Higashinihon Daishinsai no kyoukun wo ikasu tame ni*. Tokyo: Iwanami Shoten.